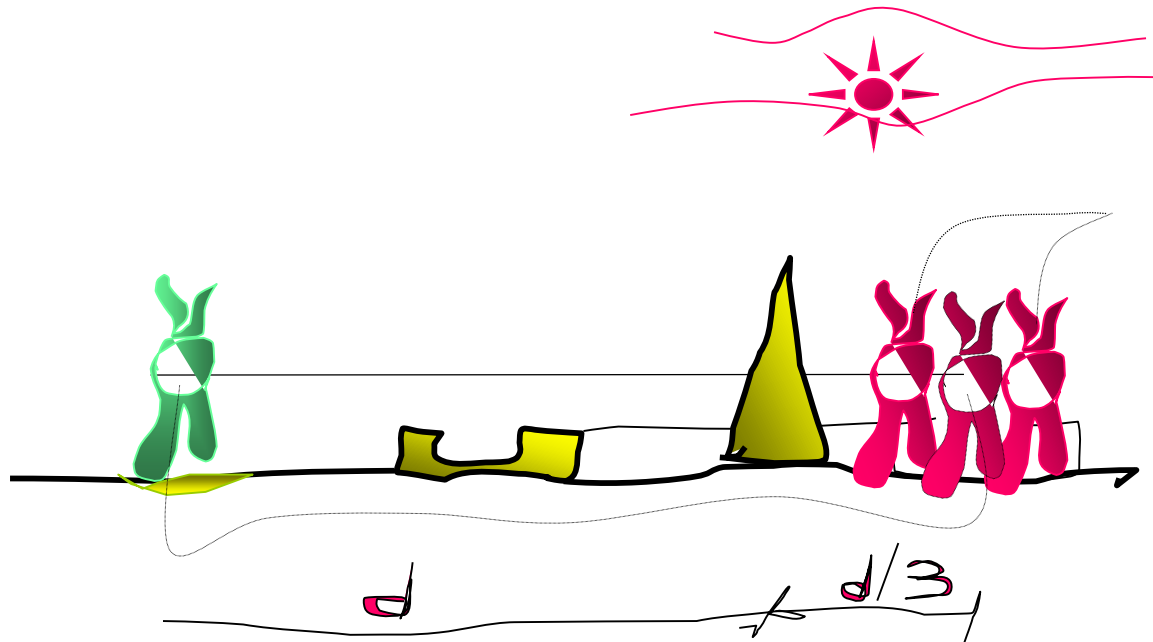


CCS improved turbine



IDEA developers
Experimental Creative Culture
18th November 2017



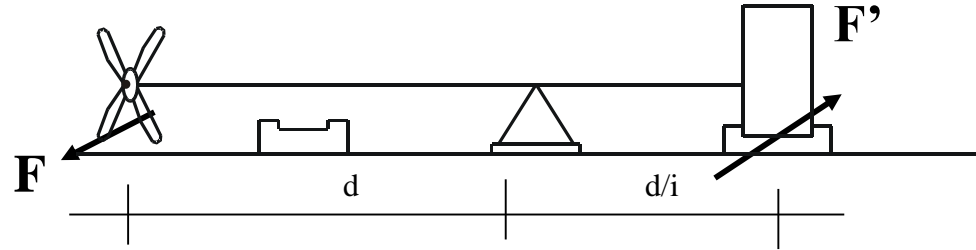
GRINDER PROPELLED BY DONKEY



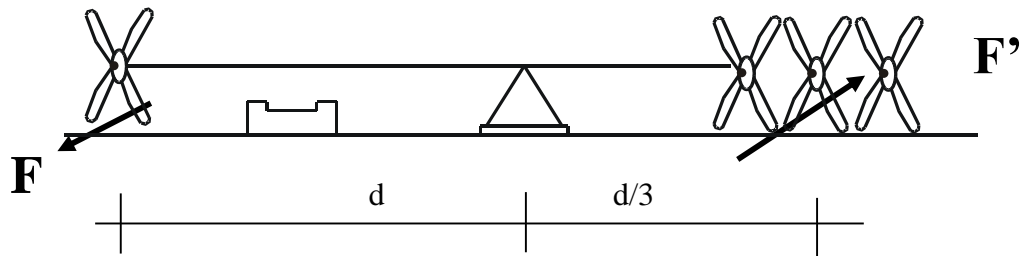
Nothing new
a thousand-year-old
technology

Let's better understand and
Pay attention

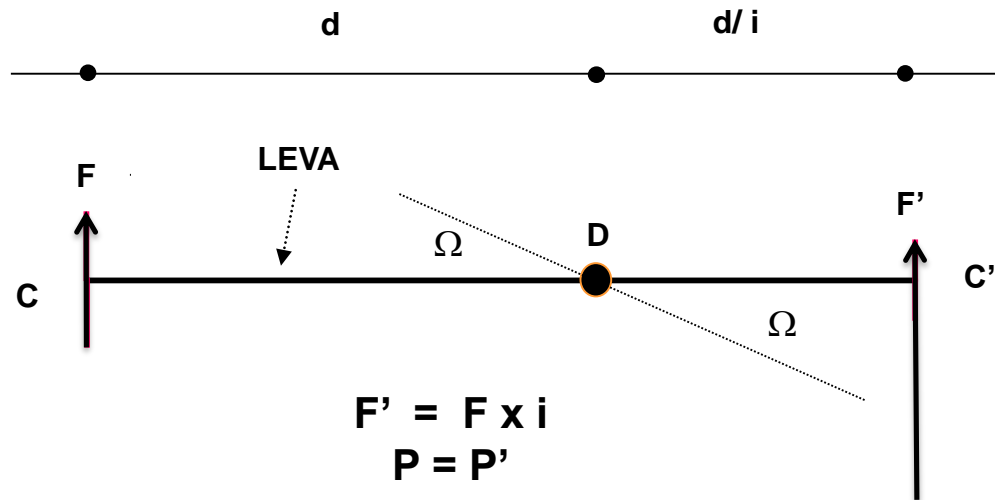




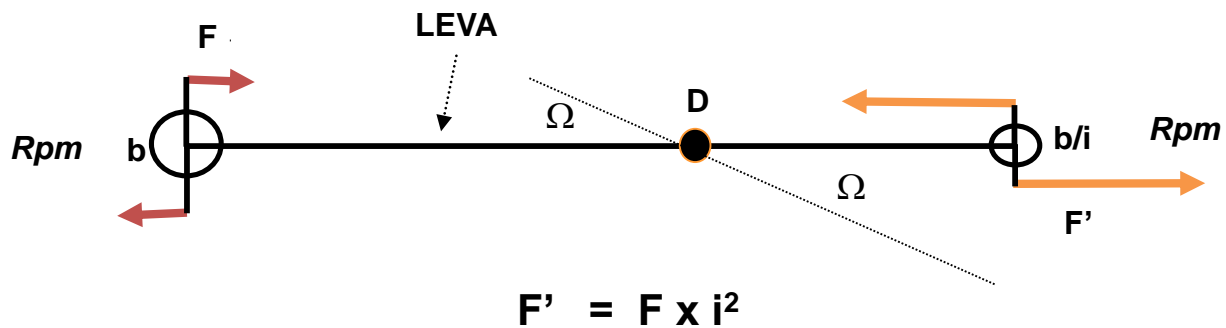
GRINDER



IMPROVED GRINDER-CCS TURBINE



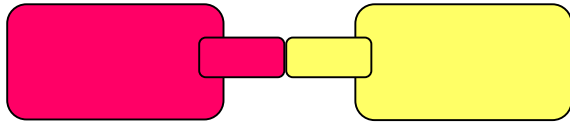
**LEVA
CLASSICA**



TURBINA CCS

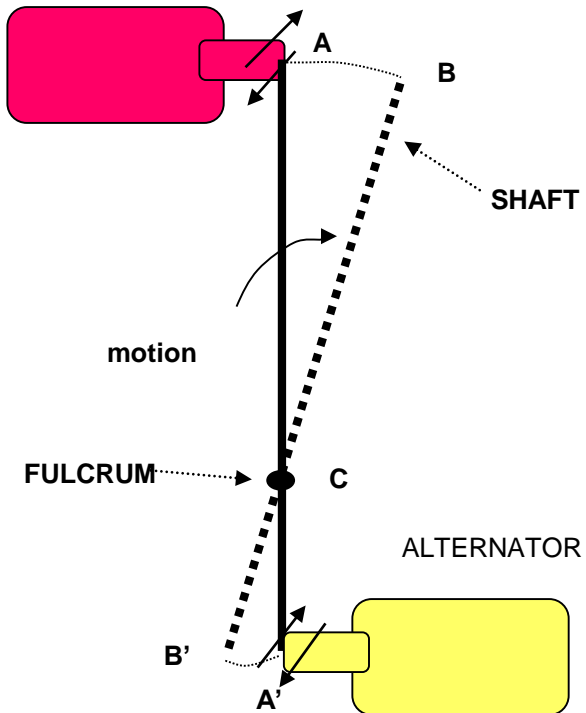
ENGINE

ALTERNATOR

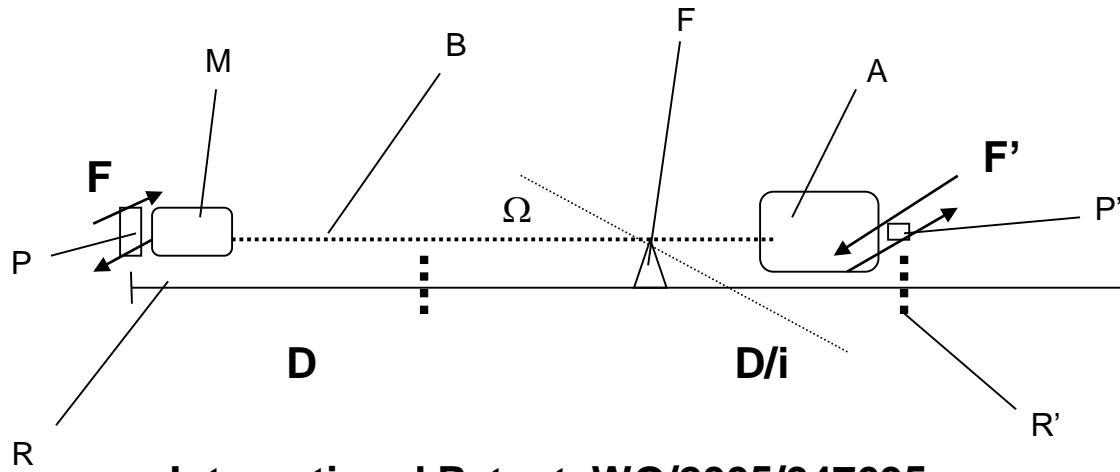


Classic situation

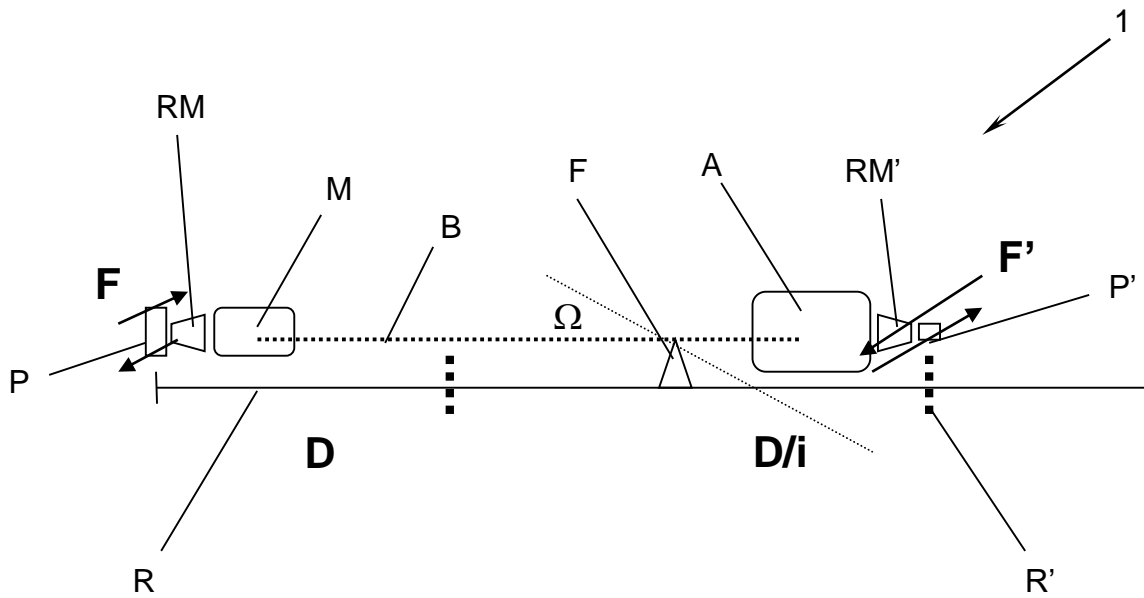
ENGINE



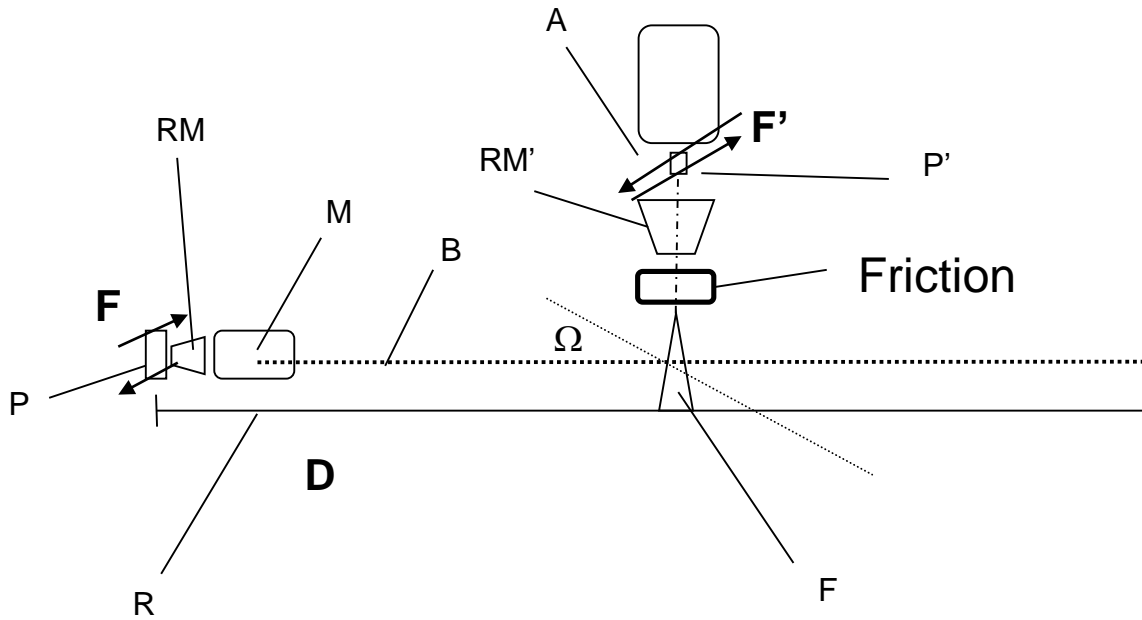
CCS improved turbine



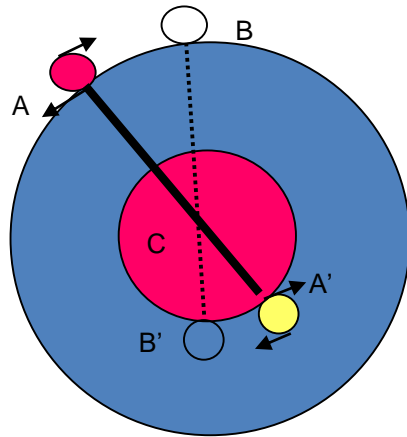
International Patent WO/2005/047695



European Patent EP 2489875



European Patent EP 2489875



Engine Power < Alternator Power

$$\text{If } A'C = \frac{1}{2} AC \Rightarrow i = 2$$

$$F' \times b' \times \text{rad}'/s = 2 \times F \times b \times \text{rad}/s$$

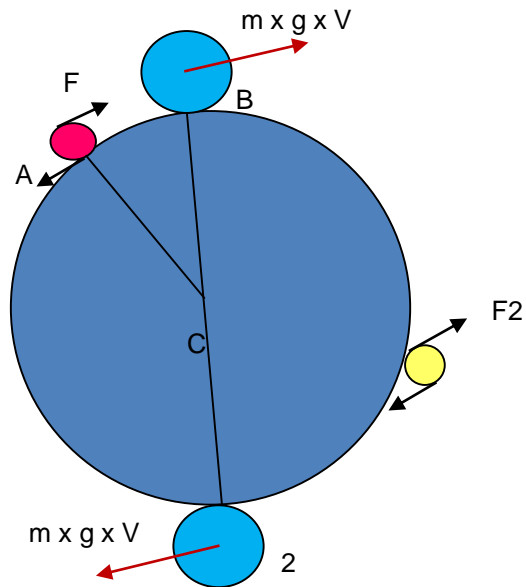
$$\text{Alt. Power} = 2 \times \text{Engine Power}$$



Rototraslating Engine



Rototraslating Alternator



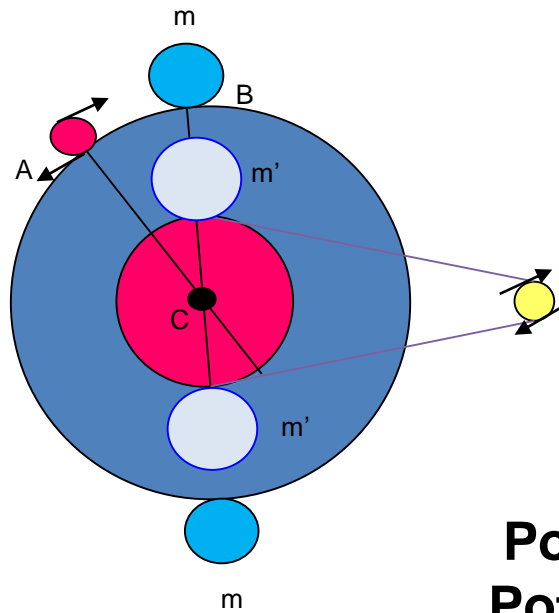
The engine power is the same as the alternator one

The masses dragged because of the kinetic energy, don't become couples

 **Rototraslating engine**

 **Fixed alternator**

 **Mass dragged by kinetic energy**



Potenza alternatore > Potenza motore
Potenza alternatore = Potenza motore x i



Motore rototraslante

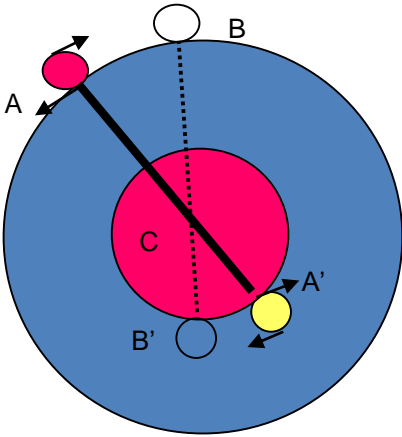


Alternatore fisso

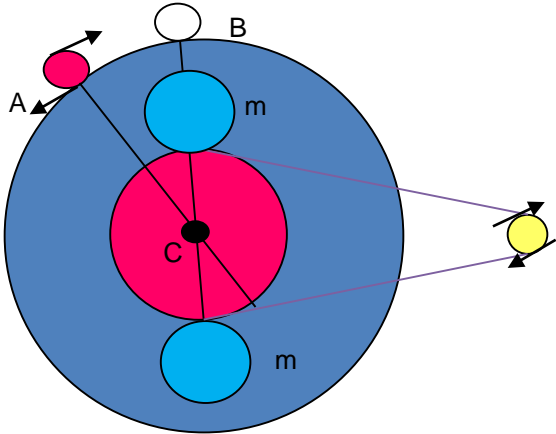


Massa trascinata in energia cinetica

Convenience verdict

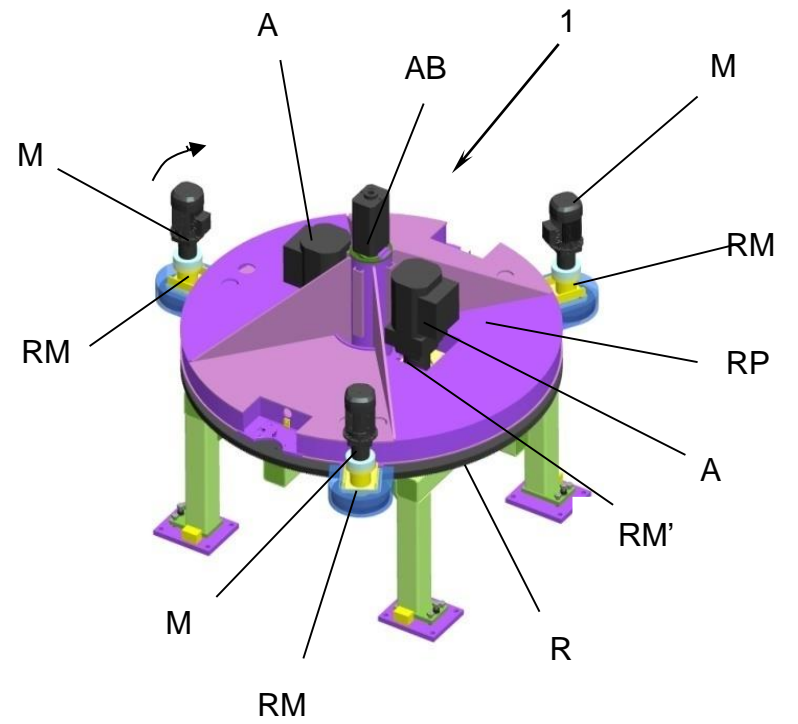
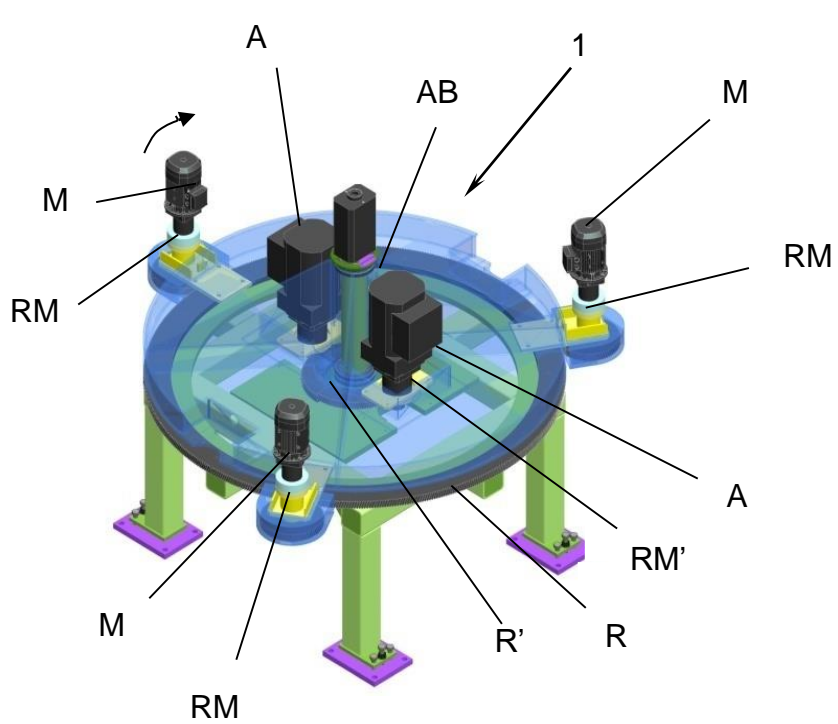


Configuration A

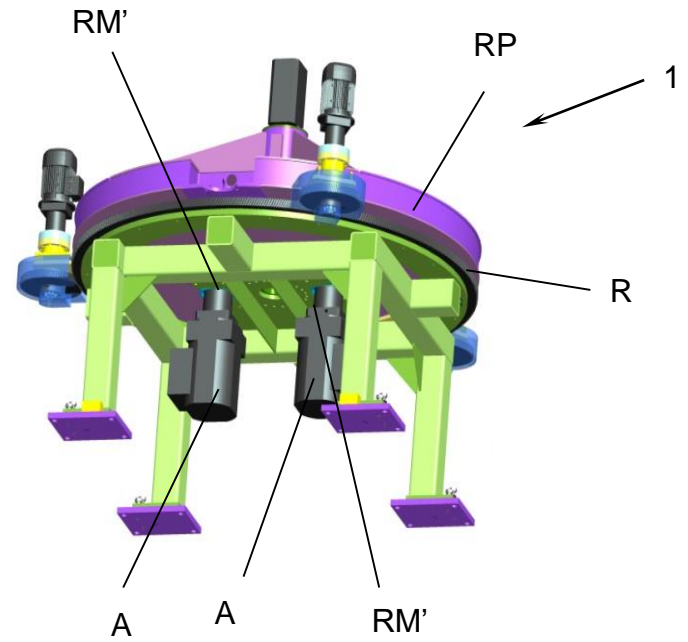
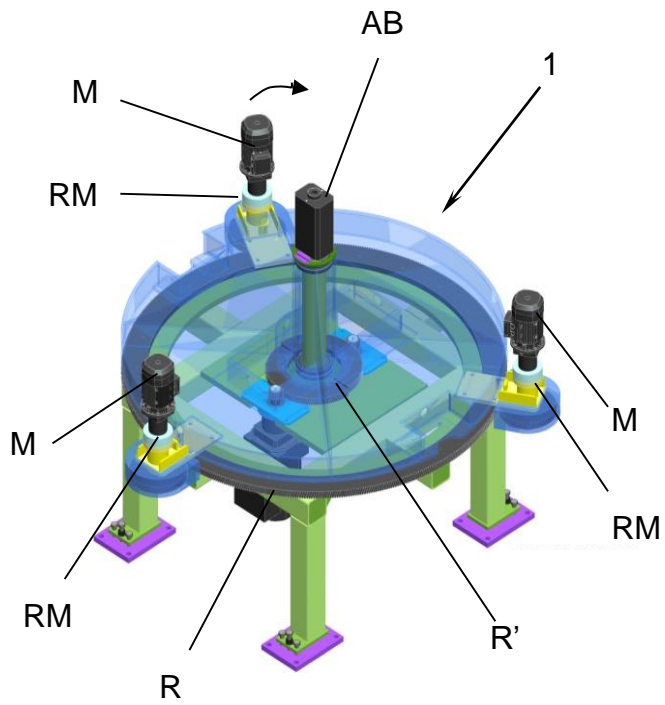


Configuration B

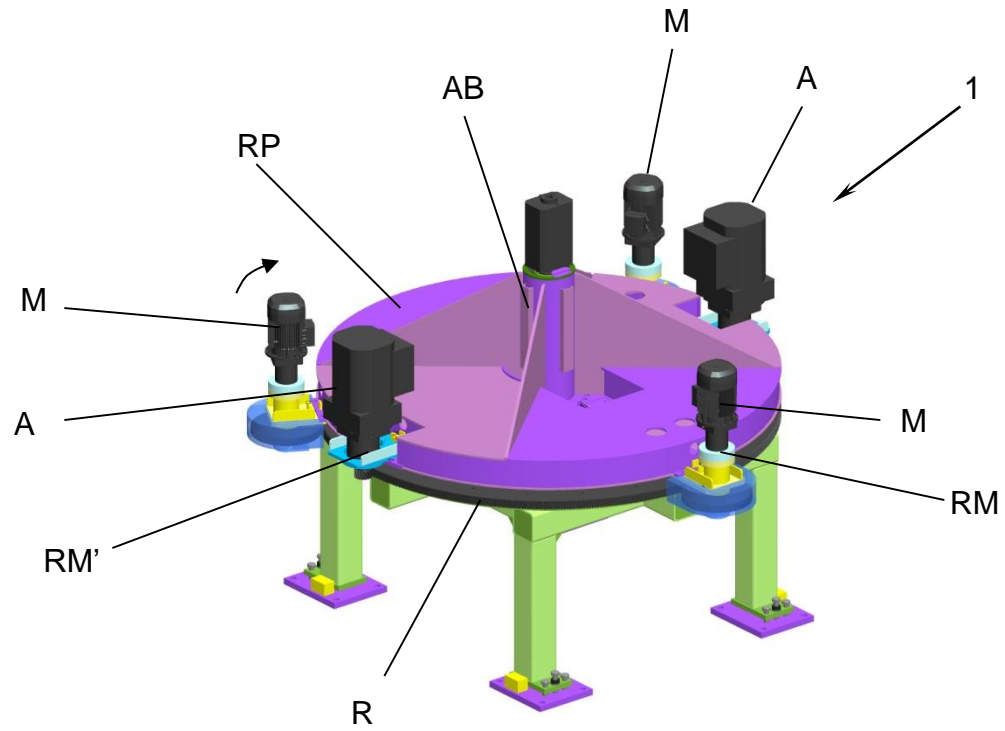
Both solutions are equivalent



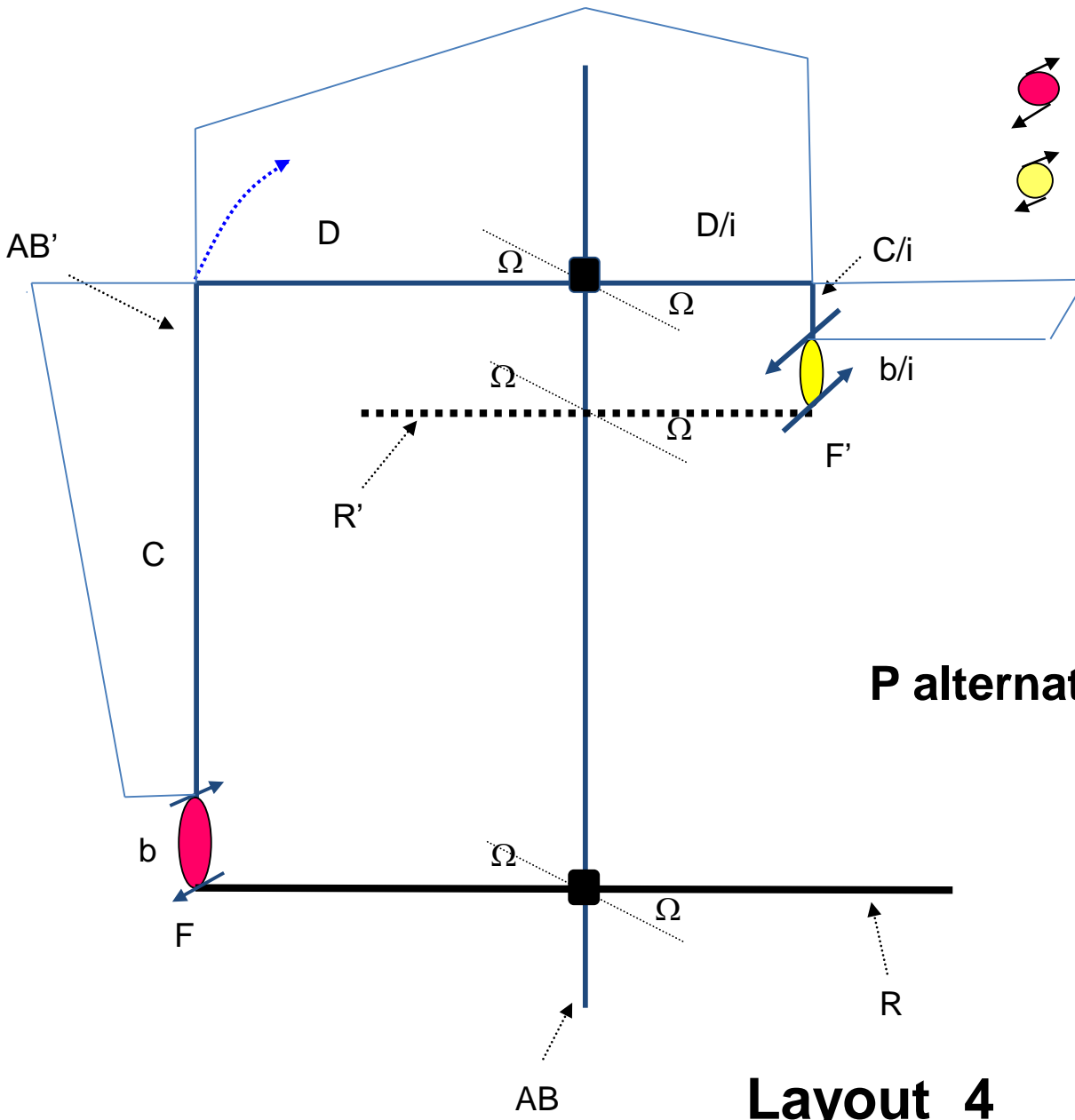
Layout 1





Layout 2



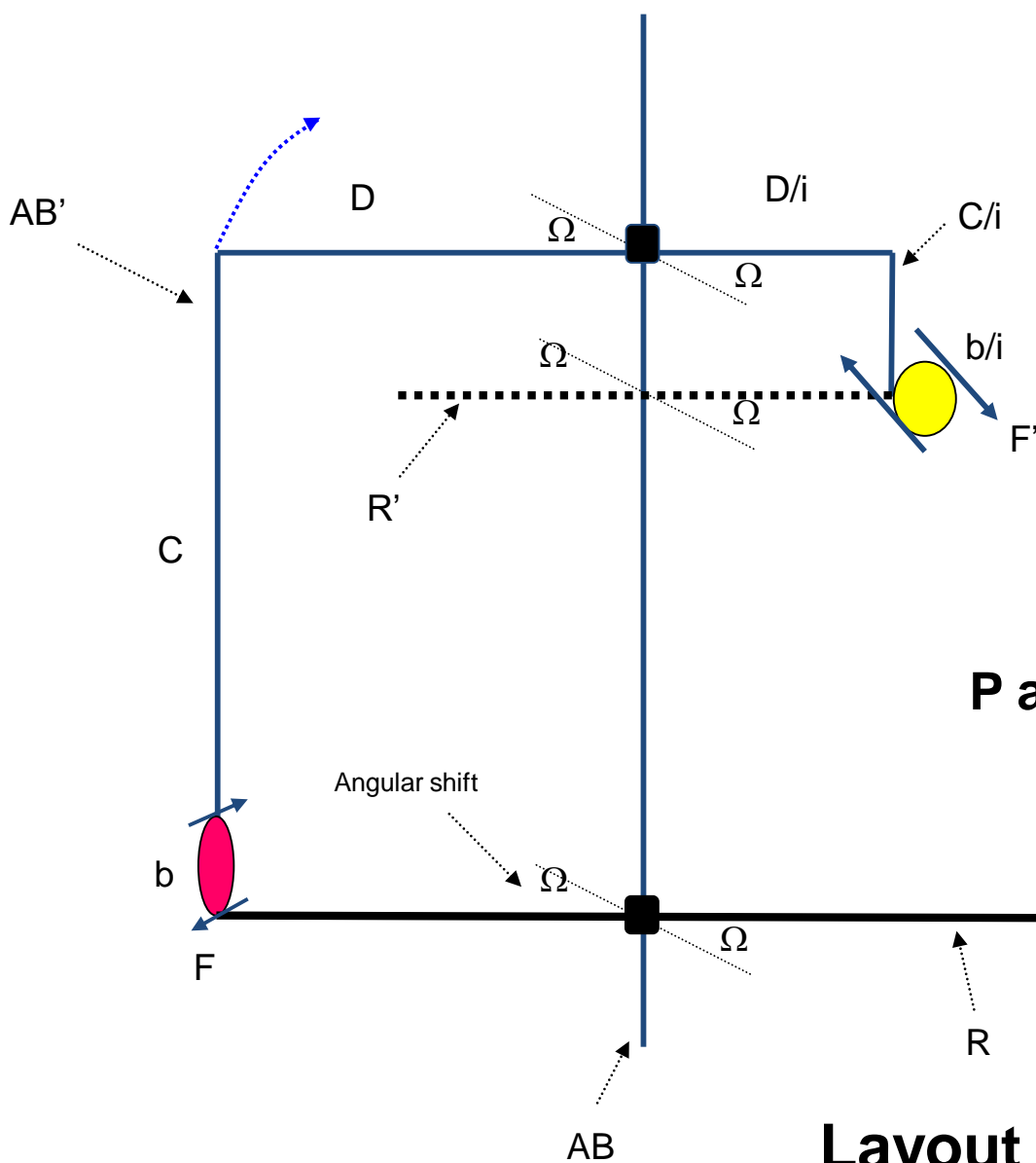
Assetto 3





-  **Rototraslating engine**
-  **Rototraslating alternator**

P alternator > P engine

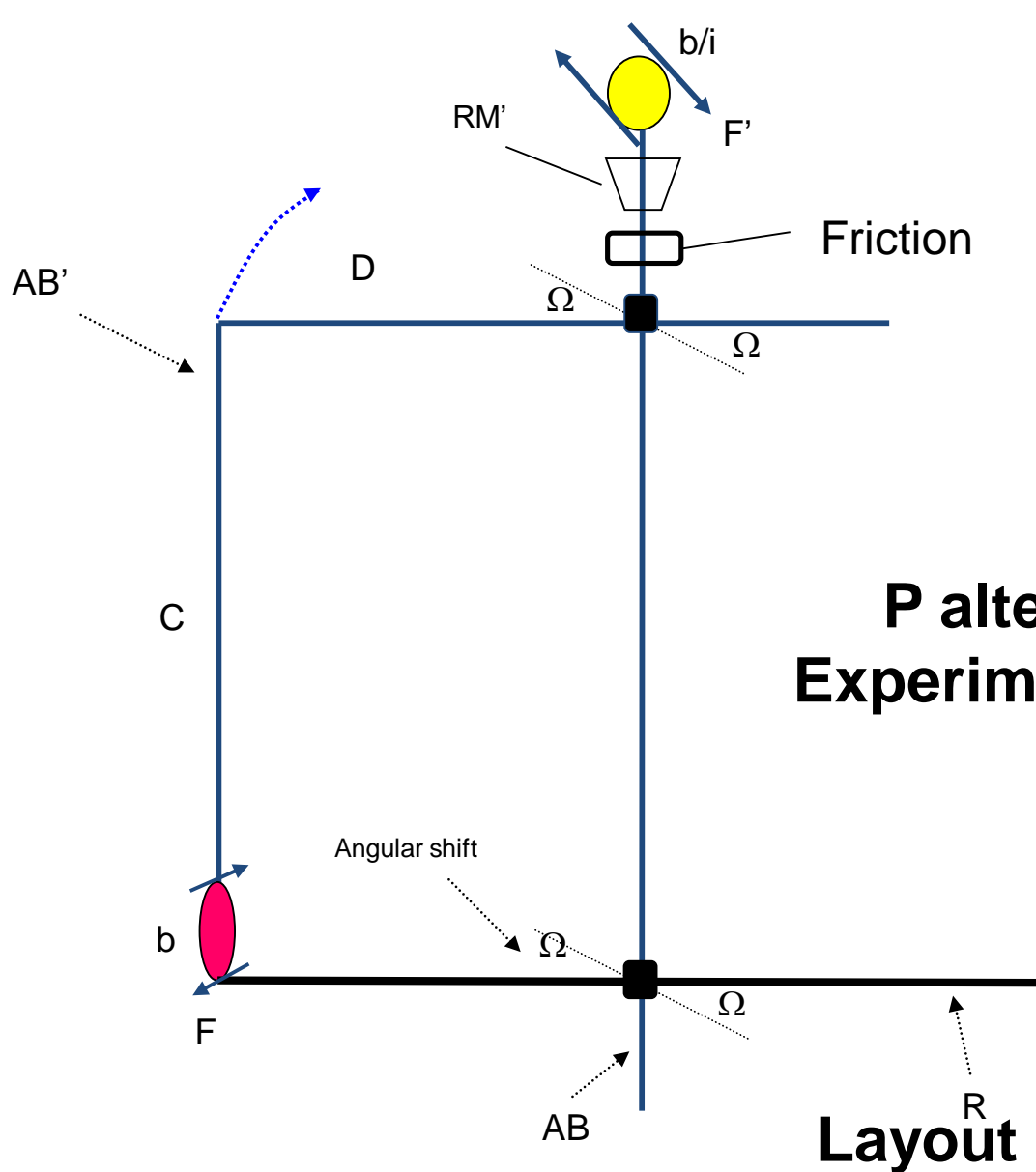
Layout 4





- 
Rototraslating engine
- 
Fixed alternator

P alternator > P engine

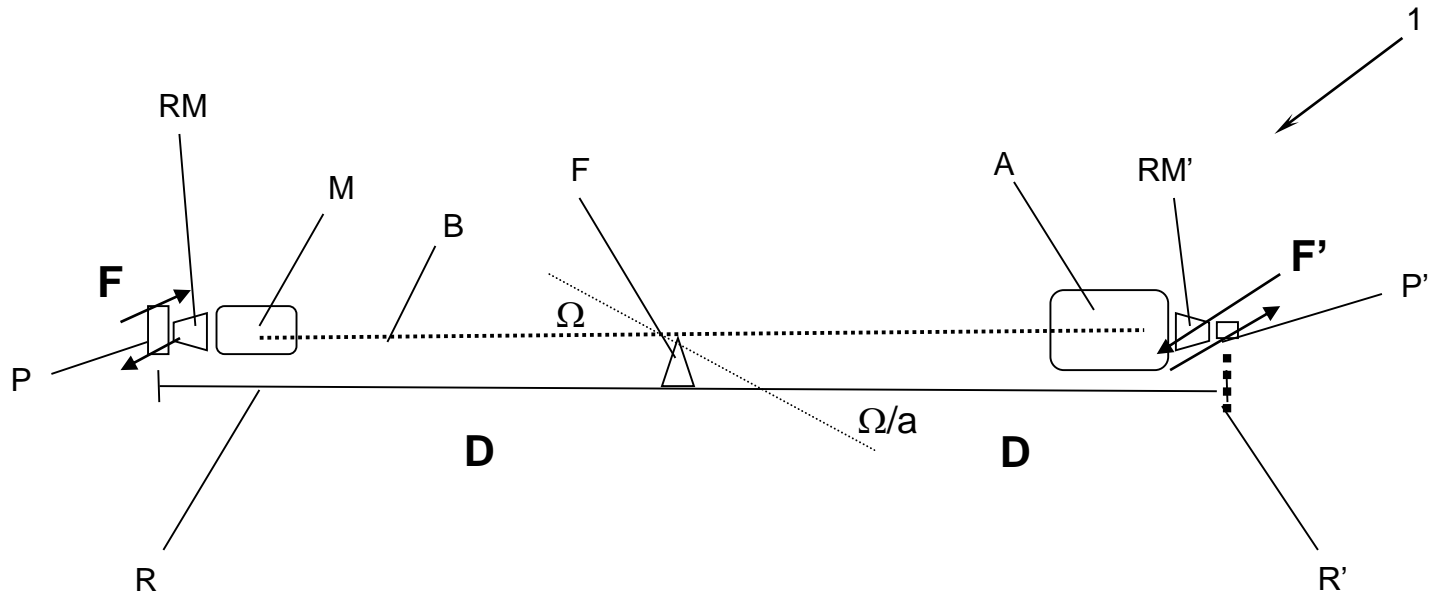
Layout 5



-  Rototraslating engine
-  Fixed alternator

P alternator > P engine
Experimental unit of measure
needed

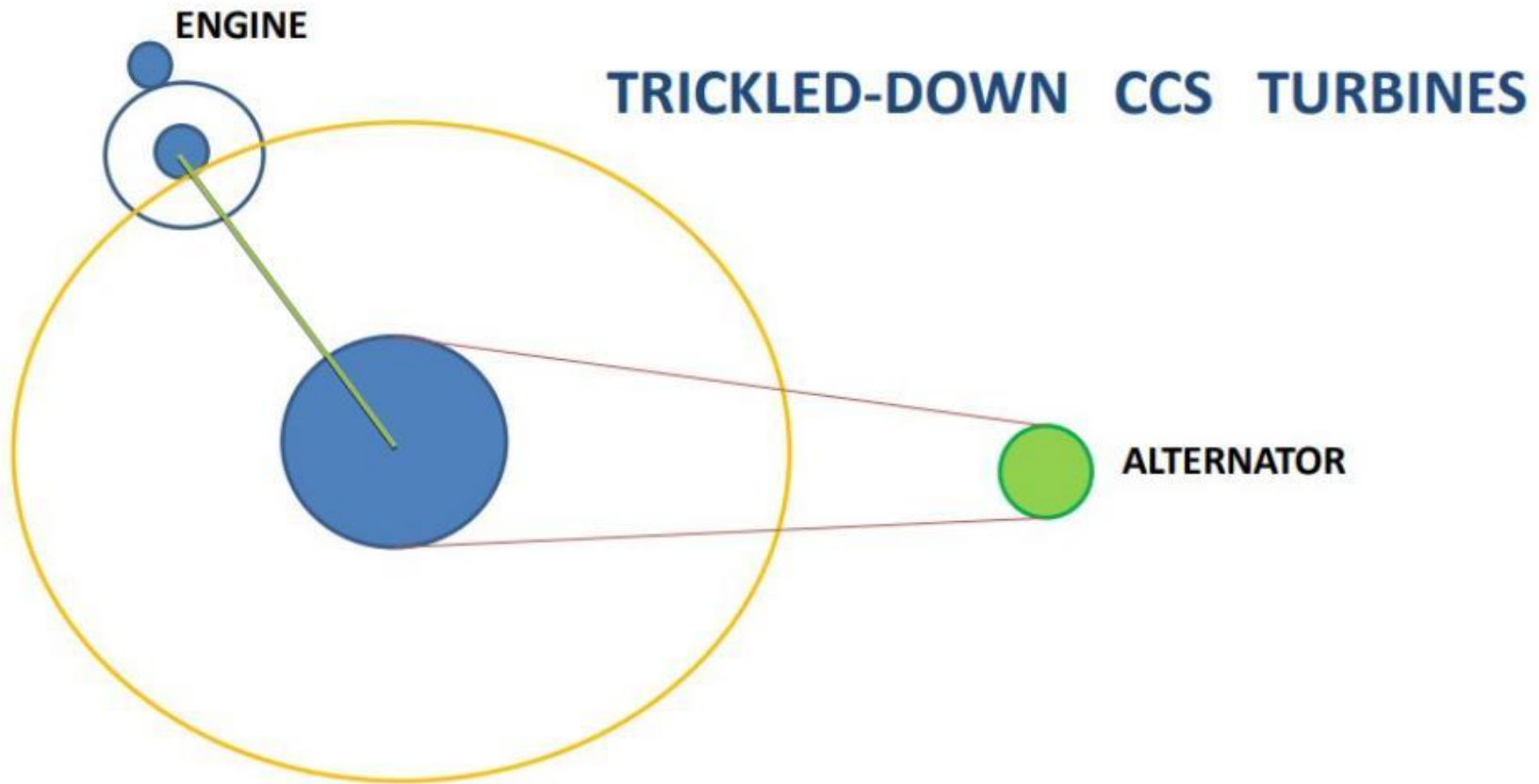
Layout 6



$$RM' / RM = a$$

$$P' = P \times a$$

European patent EP 2489875



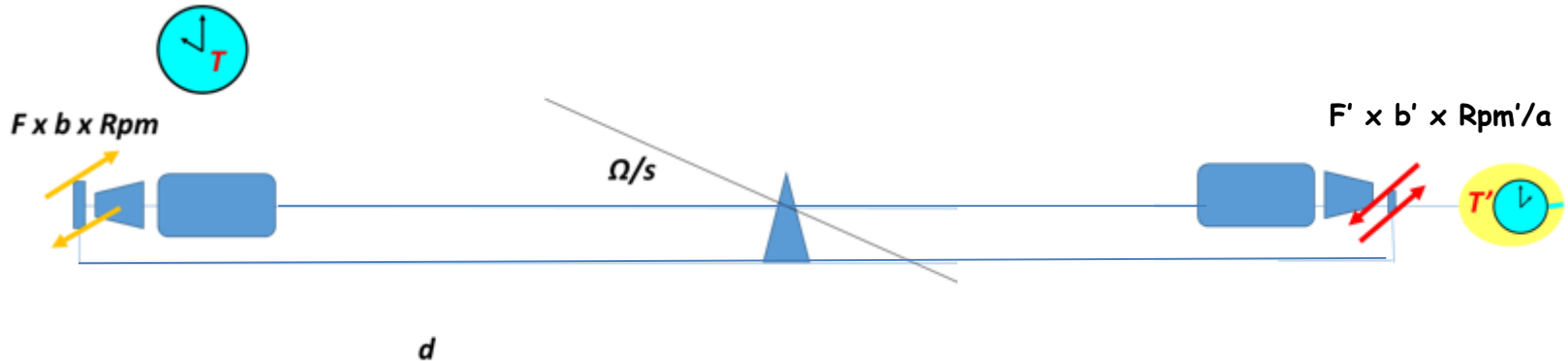
From one of the established layouts of the CCS turbine we can focus on the CCC turbine that derives from a “trickled-down” power moment, where from a single power multiplication we can have a power moment of a power moment and so on:

$$\frac{P_{motore} \cdot d \cdot \omega}{d' \cdot \omega} \times d'' \times \omega'' / d''' \times \omega''' = P''' \quad \text{trickled-down power}$$

Layout 7

TIME DISTORTION

Paradise is waiting for us



Movement distortion

Time distortion

Electric car

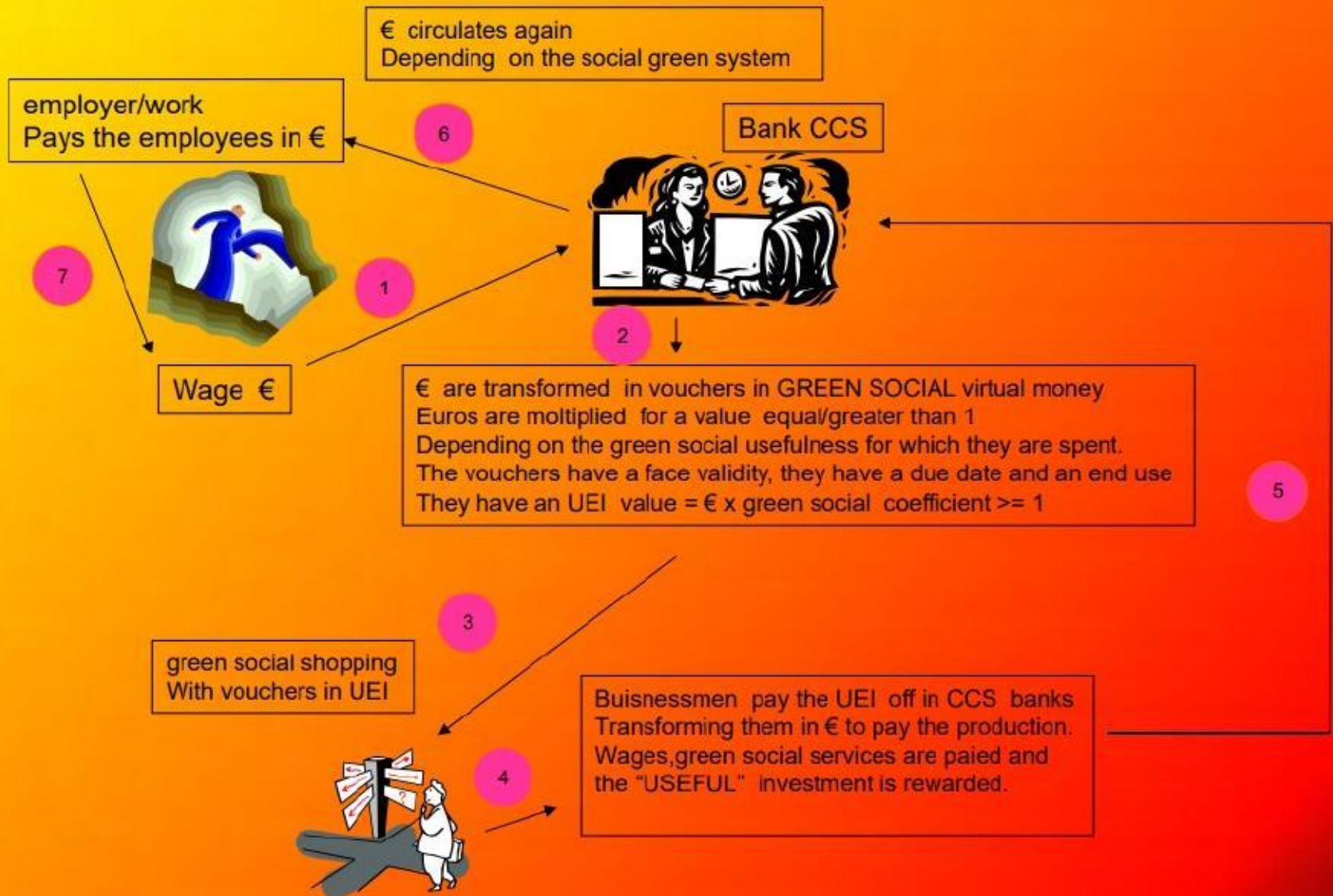
Ecological footprint

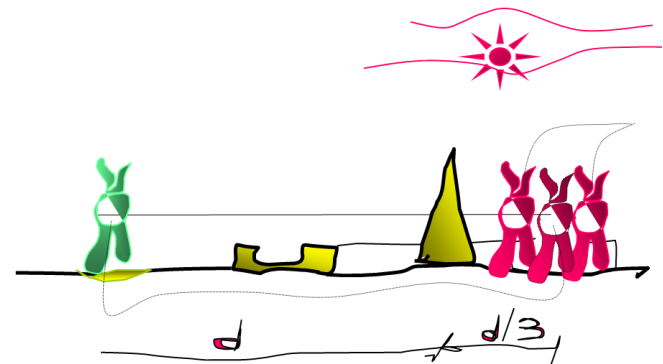
Paradise is waiting for us

**Communication and visualisation e visualizzazione
between distorted realities**

Communications with “extraterrestrial” realities

HOW GREEN SOCIAL MONEY WORKS





CCS improved turbine

Experimental Creative Culture

**Thanks for your attention
Alessandro Leghi**