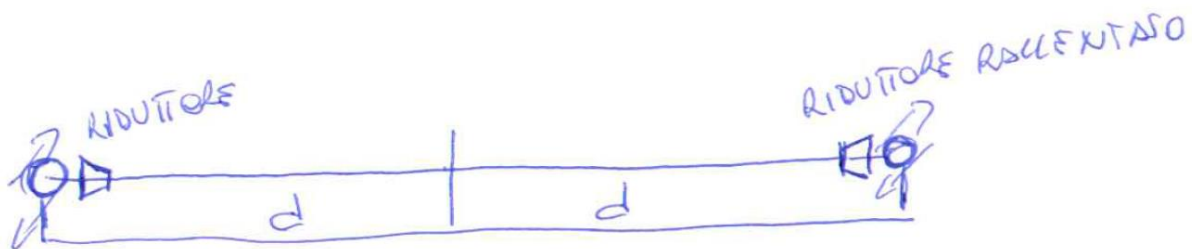


### TECHNICAL NOTE N.3 TIME DISTORTION

It's true that when you have a new idea, a new concept you start seeing everything around you in a different way; as if everything worked following that new rule. I hope to make myself clear and that people understand the following concepts because everyone is concerned and it's important for future generations.

If my report about the layout with fixed adaptors has been understood, the CCS turbine with a slowed-down adaptor of the power supplier can distort space in a unity of time. Even following the same angular displacement as the engine, there's a slowed-down displacement on the shaft of the power supplier; even though the arm of the powers is the same, the power supplier does a greater work and has a greater power in order to produce the same amount of kinetic energy or power moment. See sketch below:



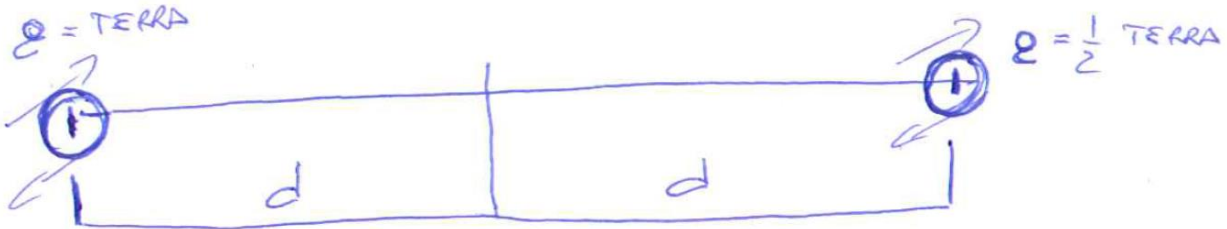
This should be understood by now and this technology could be useful for electric cars. I could save a lot of energy and recharge part, if not all, of the battery that propels the engine (the battery is necessary to start the car and to keep it going) by exploiting the mass of the vehicle and until the adherence allows it with the help of a slowed-down alternator applied to the engine. This is only one of the countless usages that this technology is capable of. Let's imagine what kind of environmental impact they could have and how many economical benefits this application would bring. So far everything's sure; now let's move on to a **concept to test**: time distortion in an advanced CCS turbine system.

Imagine to have a hinged bar with 2 arms of the same length; now imagine to apply a rototraslating habitable capsule pushed by an engine that follows the rules of the terrestrial gravity ( $9,8 \text{ m/s}^2$ ) on one side; on the other a rototraslating room with an alternator that follows the rules of another gravitational context; let's say half the terrestrial gravity. If gravity can be dominated in a reliable way, what's the relation in this system.....

I think that there'd be an increase in power on the side of the alternator because this system distorts the time unit in space; it slows it down and the alternator produces more power in order to produce the same amount of power. This system is used by our universe to support its enlargement and its existence; on a general note

it's possible to have a reversal of this system if something 'conks out'.....almost unimaginable.....I hope so.....

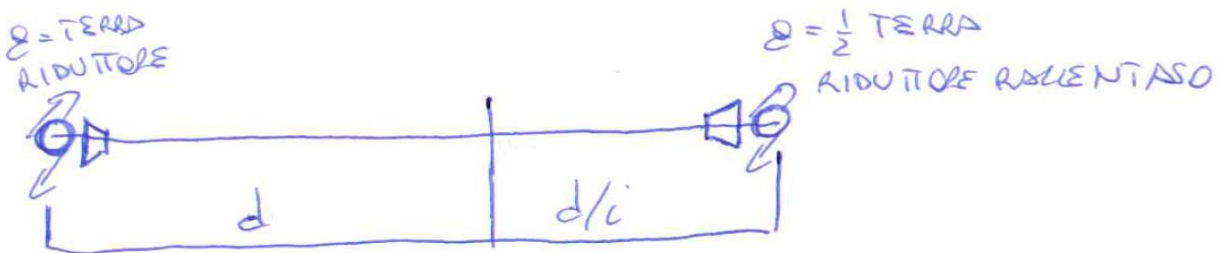
For this concept, see the sketch below:



At this point there are a lot of questions: if I built big enough capsules and if I were on the side of the power supplier, would I be able to slow down my ageing process? Would I have health issues in order to adapt to a different gravity, even breathing oxygen? If in this capsule there were another one with terrestrial gravity and I were in it, would I experience a time distortion? Would my ageing process slow down? I'm too ignorant to answer these questions, nonetheless these deserve to be tested and answered...I just hope someone will after discovering how to master gravity.

One more thing: I ask you to associate these 2 systems and to imagine a system that puts together distortion of space and time reducing the power arm on the side of the power supplier. When it comes to energy I'd have a super efficient system and it could bring unthinkable things. Auto-feeding and auto-sufficient systems that allow us to adapt to different gravitational situations or allow us to distort time, prolonging life (I don't know if it's truly a good thing).

See sketch below:



## SPACE-TIME DISTORTION CONSEQUENCE



The main consequence of the space-time distortion is the following:

If two separate elements start from A to get to B with different and independent methods, times and routes, with different gravities then it's not certain that the element that gets to destination B last travels a greater distance and it's not certain that it takes a greater time than the other element.